

Medicine Cabinet – Surface Mounted, Enameled Steel – 14-1/4" [362] w x 20-1/4" [514] h

Shower/Tub Accessories

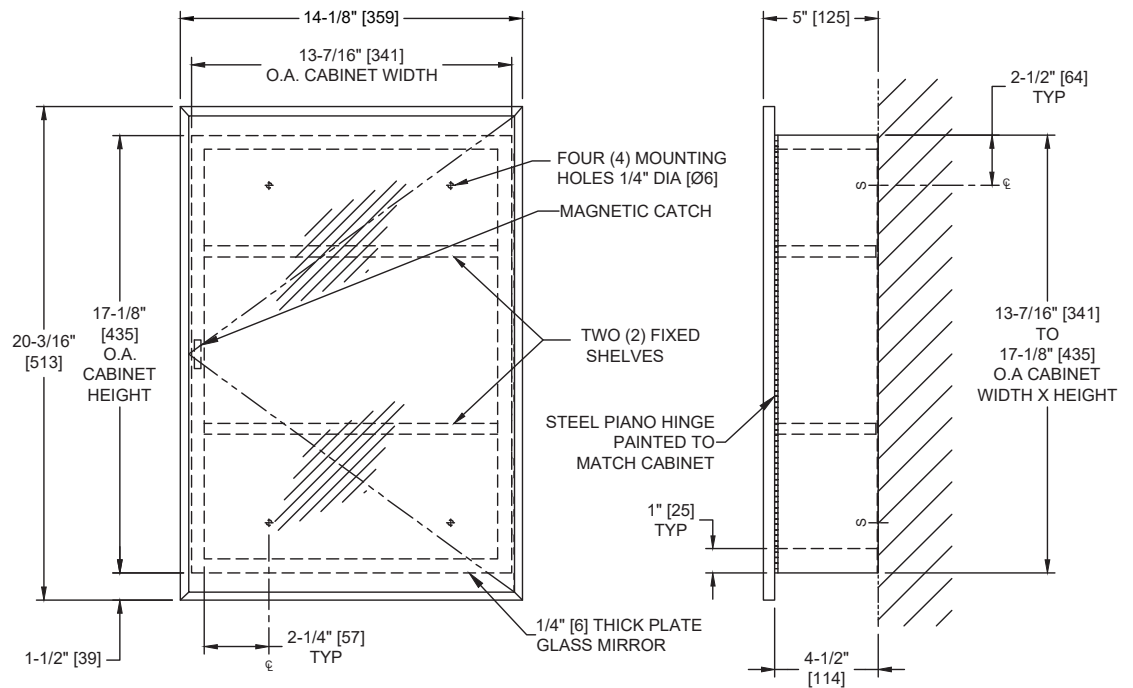
MasterFormat Section 10 28 13



Scan for
Information



SUSTAINABILITY/LEED



NOTE:
ALL DIM'S INCH [MM]
ILLUSTRATION FOR REF ONLY AND NTS

PRODUCT OVERVIEW

One-piece, drawn cold rolled steel with white powder coated steel finish. Stainless steel channel framed mirrored door with 1/4" [6] thick plate glass, has continuous piano hinge and magnetic catch. Provided with two (2) fixed white enamel steel shelves.

KEY FEATURES & SPECIFICATIONS

- Channel framed mirrored door with a Continuous Piano Hinge
- Comes with 2 fixed shelves
- Enamel Coated Steel
- 1/4" [6] thick plate glass
- Surface Mounted

OPERATION & MAINTENANCE

Pull the door to access contents and manually push door to engage magnetic catch that holds door shut.

TECHNICAL INFORMATION / PRODUCT PROPERTIES

Property	Value
Dimensions	14-1/8" [359] W x 20-3/16" [513] H x 5" [125] D
Construction	Enamel Coated Steel 1/4" [6] thick plate glass
Mounting	Surface Mounted
Materials	<u>Cold Rolled Steel With a Neutral Baked Enamel Finish.</u>

INSTALLATION

Install unit on wall using four (4) #10 pan head self-threading screws (by others) through mounting holes provided in cabinet back. For general utility mount unit 46" [1168] above finished floor (AFF) to bottom of unit or 12" [305] above wash basin. For compliance with 2010 ADA Accessibility Standards install unit so that bottom edge of mirror is 40" [1016] MAX AFF.

ADDITIONAL INFORMATION**WARRANTY**

One (1) Year from date of Invoice