

1-1/2" Dia. Omara Grab Bar

Grab Bars

MasterFormat Section 10 28 13



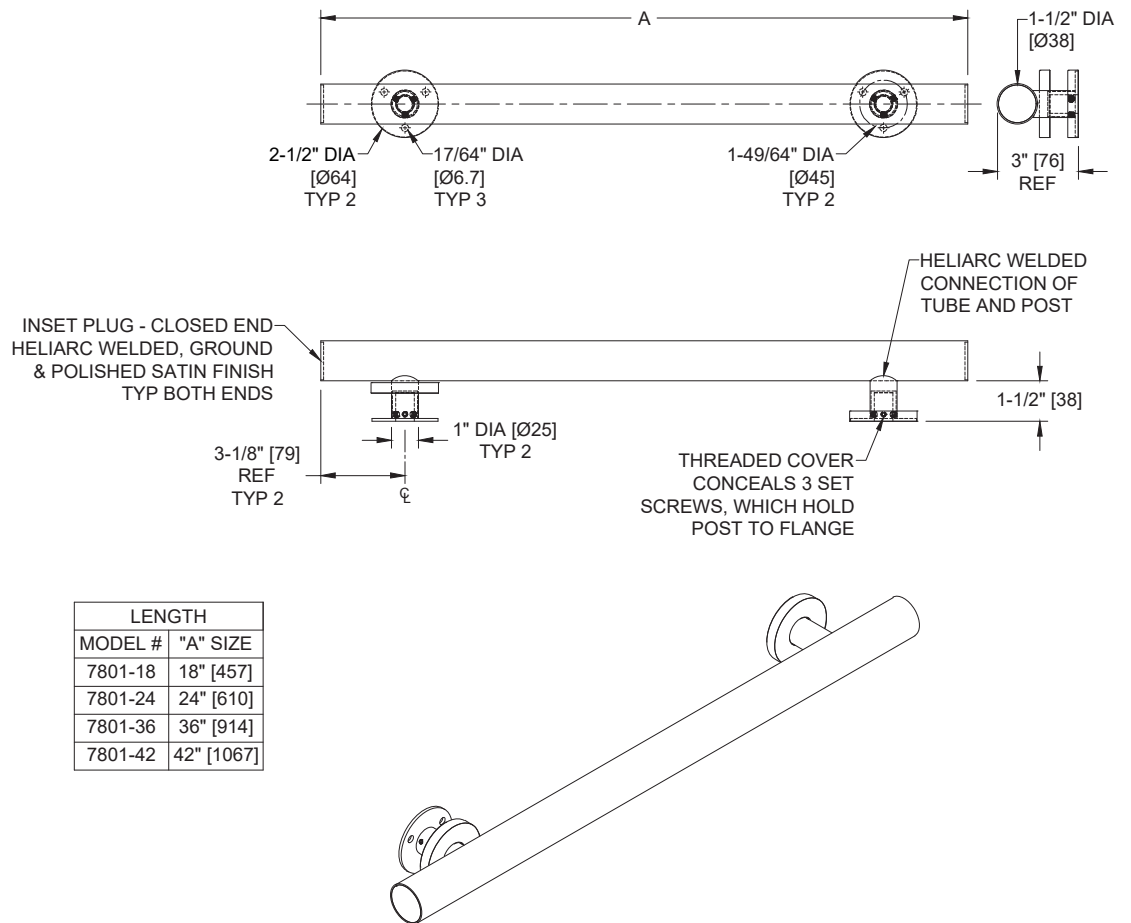
Scan for
Information



SUSTAINABILITY/LEED

MR 4.1 (1) MR 6 (1) EQ 4.2 (1)

MR 4.2 (1) EQ 4.1 (1) EQ 4.4 (1)



NOTE:
ALL DIM'S INCH [MM]
ILLUSTRATION FOR REF ONLY AND NTS

PRODUCT OVERVIEW

Features include threaded cover that screws-on over mounting flange to conceal screws and mounting flange of 2-7/16" OD [Ø62] with 3 screw holes; 1/8" [3] thick, type 304 stainless steel. Cover is type 304 stainless steel with a satin finish and 20 gauge, 2-1/2" OD [Ø64]. Bar tube is 1-1/2" OD [Ø38] with smooth surface.

KEY FEATURES & SPECIFICATIONS

- Straight Grab Bar
- Flange cover screws on over mounting flange to conceal mounting screws and retaining set-screws
- Type 304 Stainless Steel - Satin Finish
- Surface Mounted
- 18 gauge tubing with 1-1/2" OD [Ø38]
- 16 gauge posts with 12 gauge wall flange
- 3/32" wall thickness internal liner plug inside posts

OPERATION & MAINTENANCE

Stainless Steel washroom accessory products require regular surface cleaning, much the same as stainless steel sinks, pots and pans and eating utensils. As long as a regular cleaning schedule is followed, the best method is cleaning with a soft clean rag moistened with a mild detergent, followed by a water-moistened clean rag and then a dry rag. For a "new" look, surfaces can be wiped with lemon oil applied by a soft polishing cloth to maintain sheen. Stainless Steel should be protected against muriatic acid and caustic or abrasive materials, and harsh cleaning detergents [with pH outside the range 7 ± 1.5]. In the event such agents cause discoloration, polishing with a stainless steel cleaner such as 3M™ Stainless Steel Cleaner & Polish® and a soft cloth on bright or mirror finishes, or for satin finish surfaces the Stainless Steel cleaner and 3M™ Scotch Brite® pad either blue (less aggressive) or green (more aggressive) is recommended.

TECHNICAL INFORMATION / PRODUCT PROPERTIES

Property	Value
Dimensions	Length of 18" [457], 24" [610], 36" [914] or 42" [1067]
Construction	Type 304 Stainless Steel - Satin Finish 18 gauge tubing with 1-1/2" Outside Diameter [Ø38] / 16 gauge posts with 12 gauge wall flange
Mounting	Surface Mounted
Capacity	ASI grab bars are designed to meet and exceed 2010 ADA Accessibility Standards and ANSI A117.1 that fabricated product shall be of adequate strength to support a load in excess of 250 pounds (113.4 kg). Mounting to the wall is a critical part of the system to meet this requirement. The fastener system must be adequately sized to withstand the shear, tension or pullout, and torsion loads generated by the maximum loading.

INSTALLATION

Use grab bar as template to mark mounting holes locations and pre-drill holes. Install mounting plates using three (3) 1/4" (M6) hex drive button head screws (by others) per flange into appropriate blocking. Waterproof all screw holes in wet wall installations. Place the bar post sockets (with flanges cover loose) over the mounting plate posts and secure it by tightening the three (3) set screws in each post using a ball end 2.5mm hex key. Thread the flange covers onto the flange and tighten against the wall. Appropriate anchoring and backing must be provided in accordance with local building codes or as specified on Architects Plans prior to wall finishing. For compliance with 2010 ADA Accessibility Standards install unit so that the top of the grab bar is 33" [840] minimum Above Finished Floor (AFF) to 36" [915] maximum AFF.

WARRANTY

One (1) Year from date of Invoice