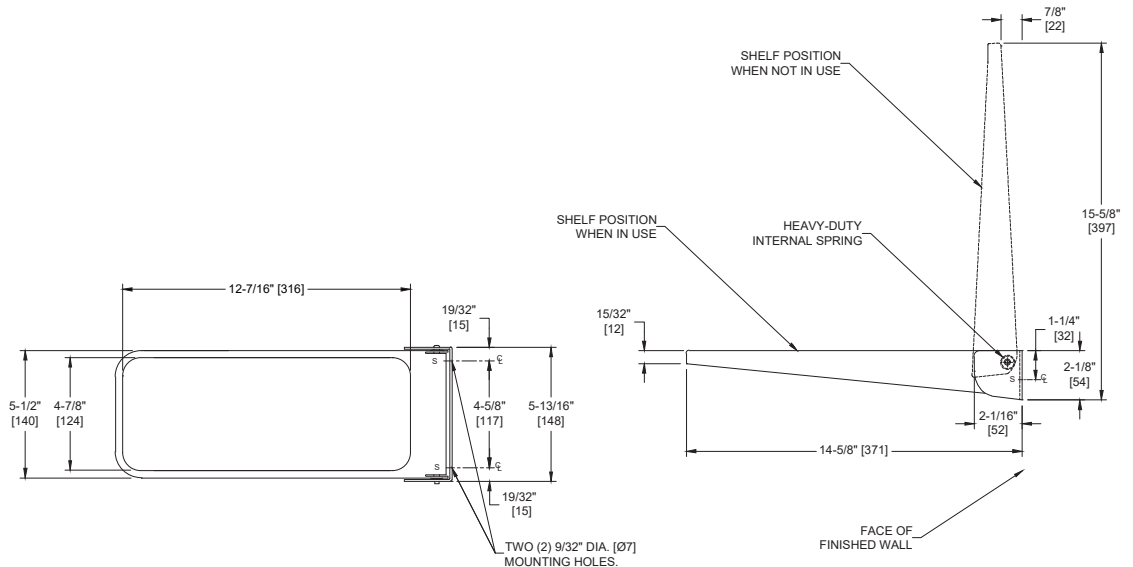
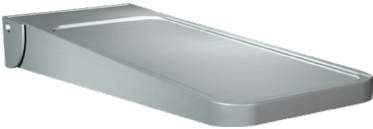


**Shelves, Utility (Fold Down-type) – Surface Mounted**

Shelves

MasterFormat Section 10 28 13



Scan for  
Information



**SUSTAINABILITY/LEED**

MR 4.1 (1) MR 6 (1) EQ 4.2 (1)  
MR 4.2 (1) EQ 4.1 (1) EQ 4.4 (1)

**NOTE:**  
ALL DIM'S INCH [MM]  
ILLUSTRATION FOR REF ONLY AND NTS  
FOR CLEANING INSTRUCTIONS SEE APPROPRIATE SECTIONS IN  
PRODUCT CARE & MAINTENANCE BULLETIN (PCM) ON ASI WEBSITE

**PRODUCT OVERVIEW**

Top surface of stainless steel shelf includes a raised rim to prevent objects from slipping off shelf. Internal spring counterbalance is captive and suitable for heavy duty service. Shelf is manually lowered and retained in operating position by placing a weight such as a pocketbook or small package upon shelf. Shelf automatically returns to vertical storage position when unloaded.

**KEY FEATURES & SPECIFICATIONS**

- Folds down when needed
- Type 304 Stainless Steel - Satin Finish
- Surface Mounted
- Shelf folds down when not in use

## **OPERATION & MAINTENANCE**

Shelf is manually lowered and retained in operating position by placing a weight approx 8~10 oz [0,23~0,28 kg] such as a pocketbook or small package upon shelf. Shelf automatically returns to vertical storage position when unloaded. Tested to support 170 lbs of vertical load [77.1 kg].

## **TECHNICAL INFORMATION / PRODUCT PROPERTIES**

Property	Value
Dimensions	Open: 5-13/16" [148] W x 2-1/8" H [54] x 15-5/8" [397] L Folded: 5-13/16" [148] W x 15-5/8" [397] H x 2-1/16" [52] D
Construction	Type 304 Stainless Steel - Satin Finish  Shelf Construction 18-8, type 304, #18 gauge (.048 in. <1.22mm> thick) stainless steel. Unitized all welded construction. Exposed surfaces have satin finish. Edges and corners are radiused and burr free. Bracket Construction 18-8, type 304, #14 gauge (.075 in. <1.91mm> thick) stainless steel. Exposed surfaces have satin finish. Edges and corners are radiused, and burr free.
Mounting	Surface Mounted

## **INSTALLATION**

Unit is surface mounted. Secure unit to wall or toilet partition with hardware supplied by installer to match installation type. Ensure that mounting configuration complies with local building codes.

## **SCHEDULE OF AVAILABILITY**

No Options Available

## **WARRANTY**

One (1) Year from date of Invoice