

Toilet Seat Cover & Toilet Tissue Dispenser (Dual Access) – Partition Mounted

Specialty Accessories

MasterFormat Section 10 28 13

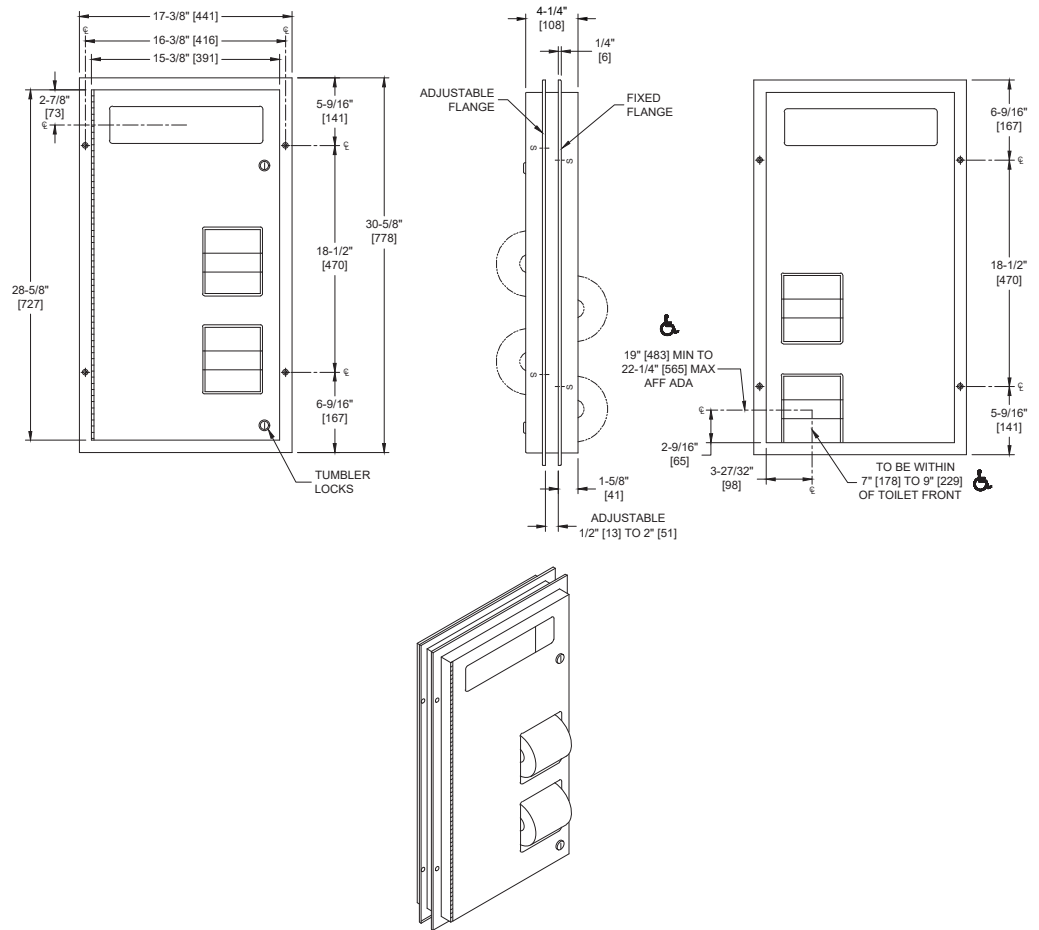


Scan for
Information



SUSTAINABILITY/LEED

MR 4.1 (1) MR 6 (1) EQ 4.2 (1)
MR 4.2 (1) EQ 4.1 (1) EQ 4.4 (1)



NOTE:
ALL DIM'S INCH [MM]
ILLUSTRATION FOR REF ONLY AND NTS

PRODUCT OVERVIEW

Holds and dispenses 1000 paper seat covers and four (4) rolls standard or 1800 sheet 4-1/2" [114] x 5-1/4" diameter [Ø133] toilet paper. Mounts centered through partition. Internal baffles prevent line of sight view from either side through unit at any time. Cabinet door is held closed with two (2) tumbler locks keyed alike to other ASI washroom equipment. Cabinet includes theft and vandal resistant rollers molded of high-impact resistant plastic with integral molded-in stainless steel endpins and four (4) rollers [p/n R-004] are supplied. Seat cover dispenser panel and toilet paper dispenser door shall be 18 gauge type 304 stainless steel alloy 18-8. Face frame and cabinet shall be 22 gauge same grade material.

KEY FEATURES & SPECIFICATIONS

- Dual Access Combination Unit for ADA Stalls
- Type 304 Stainless Steel - Satin Finish
- Partition Mounted

OPERATION & MAINTENANCE

Seat covers are self-feeding until supply is depleted. Toilet paper rolls feed freely until depleted and level of supply is constantly visible. Toilet paper rolls and paper seat covers are serviced from one side, for both stalls, by unlocking and opening door. Locked door prevents unauthorized removal. Toilet paper spindles are carried in vandal resistant sub-frame accessible when door is opened. Barrier baffle panels preserve privacy between stalls at all times.

TECHNICAL INFORMATION / PRODUCT PROPERTIES

Property	Value
Dimensions	17-3/8" x 30-5/8" x 4-1/2" [441 x 778 x 114]
Construction	Type 304 Stainless Steel - Satin Finish
Mounting	Partition Mounted
Capacity	N/A

INSTALLATION

Mount unit in partition using #10x3/4" self-threading Philips oval head screws (supplied). Holes in flanges are offset to prevent screw interference. Install unit so that top of face trim is 46-1/16" to 49-5/16" [1170 to 1253] Above Finished Floor (AFF). Note partition cutout is 7/8" [22] below top of face trim.
 Partition Cut Out (PCO) Required is 15-1/2" W x 28-7/8" H [394 x 733] x 1/2" to 2" [13 to 51] thick partition

ADDITIONAL INFORMATION

WARRANTY

One (1) Year from date of purchase