

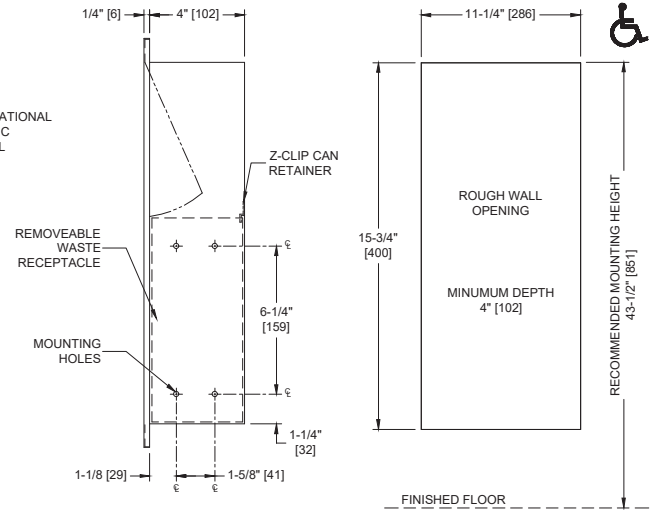
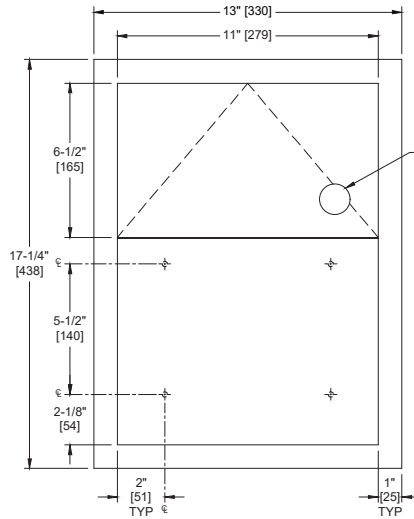
## Sanitary Napkin Disposal – Recessed

Feminine Hygiene Vendors and Disposals

MasterFormat Section 10 28 13



Scan for  
Information



## SUSTAINABILITY/LEED

MR 4.1 (1) MR 6 (1) EQ 4.2 (1)  
MR 4.2 (1) EQ 4.1 (1) EQ 4.4 (1)

**NOTE:**  
ALL DIM'S INCH [MM]  
ILLUSTRATION FOR REF ONLY AND NTS

## PRODUCT OVERVIEW

Self-closing door is mounted to cabinet with stainless steel spring hinge. Recessed for side wall installation. Holds 1.5 gal (5.7 liters) of dry solids. Users push door to deposit waste material. Door is self-closing. Unit is emptied by removing can and removing disposable waxed waste paper bag which is furnished by others. Waste container is held in place by a "Z" clip retainer to prevent inadvertent dumping of contents. Door, flanges, waste receptacle and cabinet shall be 22 gauge type 304 stainless steel alloy 18-8.

## KEY FEATURES & SPECIFICATIONS

- Type 304 Stainless Steel - Satin Finish
- Recessed
- 1.5 gal (5.7 L) of dry/solids Waste Capacity

## **OPERATION & MAINTENANCE**

Users push door to deposit waste material. Door is self-closing. Unit is emptied by removing can and removing disposable waxed waste paper bag which is furnished by others. Waste container is held in place by a "Z" clip retainer to prevent inadvertent dumping of contents.

## **TECHNICAL INFORMATION / PRODUCT PROPERTIES**

Property	Value
Dimensions	13" [330] x 4-1/4" [108] x 17-1/4" [438]
Construction	Type 304 Stainless Steel - Satin Finish
Mounting	Recessed
Capacity	1.5 gal (5.7 L) of dry/solids Waste Capacity

## **INSTALLATION**

Unit is mounted in wall recess using #10 self-threading screws (by others) through concealed mounting holes provided. Note that top of rough wall opening is 3/4" [19] below top of unit.

Rough Wall Opening (RWO) required is 11-1/4" [289] W x 15-3/4" H [400] x 4" [102] D minimum

## **WARRANTY**

One (1) Year from date of Invoice