

Paper Towel Dispenser (Multi - C-Fold) – Semi-Recessed

Paper Towel Dispensers

Traditional

MasterFormat Section 10 28 13



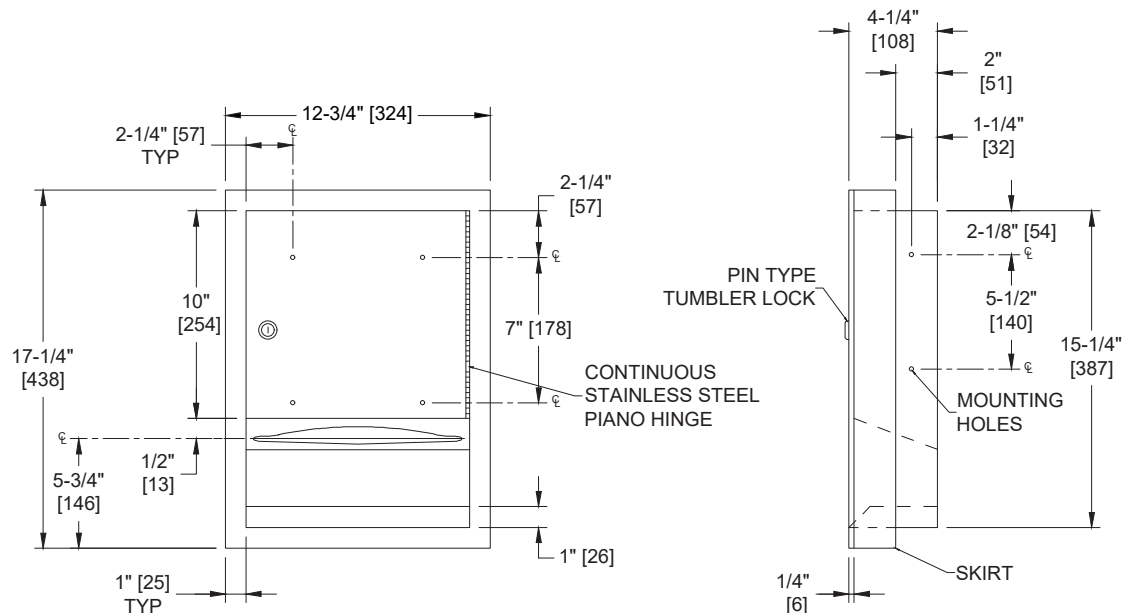
Scan for
Information



SUSTAINABILITY/LEED

MR 4.1 (1) MR 6 (1) EQ 4.2 (1)

MR 4.2 (1) EQ 4.1 (1) EQ 4.4 (1)



NOTE:
ALL DIM'S INCH [MM]
ILLUSTRATION FOR REF ONLY AND NTS
FOR CLEANING INSTRUCTIONS SEE APPROPRIATE SECTIONS IN
PRODUCT CARE & MAINTENANCE BULLETIN (PCM) ON ASI WEBSITE

PRODUCT OVERVIEW

Dispenses 350 C-fold or 475 multi-fold paper towels. Unit is semi-recessed with a 2" [51] collar. Towels are self-feeding until supply is depleted. Unit may be reloaded with a partial load in-place and will continue to feed properly.

KEY FEATURES & SPECIFICATIONS

- Compact size for smaller spaces
- Towel slot has a fully hemmed edge for snag-free dispensing and user safety
- Type 304 Stainless Steel - Satin Finish
- Semi-Recessed - w/ -2 collar
- Pull Type
- 350 C-Fold or 475 Multi-Fold

OPERATION & MAINTENANCE

Towels are self-feeding until supply is depleted. Towels are refilled from the bottom via two push-up flaps by opening the door with the key provided and placing a full stack of folded towels on top of the partial load already in place. Here's an important feeding hint: make sure the leading edge of multi-fold towel is interleaved with trailing edge of existing stack. Alternatively, make sure C-fold towel is loaded with the flaps facing down.

TECHNICAL INFORMATION / PRODUCT PROPERTIES

| Property | Value |
|--------------|--|
| Dimensions | 12-3/4" [324] W x 17-1/4" [438] H x 4-1/4" [108] D |
| Construction | Type 304 Stainless Steel - Satin Finish |
| Power | N/A |
| Operation | Manual - Pull Type |
| Mounting | Semi-Recessed with 2" collar |
| Capacity | 350 C-Fold or 475 Multi-Fold |

INSTALLATION

Unit is semi-recess mounted in wall using #10 self-threading screws (by others) through concealed mounting holes provided. For compliance with 2010 ADA Accessibility Standards install unit so that centerline of towel dispenser slot is 48" [1219] maximum above finished floor (AFF). Note that top of RWO is 3/4" [19] below top of unit. SR collar is installed on cabinet prior to mounting in wall recess following procedure described on SR Collar Data Sheet.

Rough Wall Opening (RWO) required is 11-1/4" [286] W x 15-3/4" [400] H x 2" [51] D minimum

WARRANTY

One (1) Year from date of Invoice